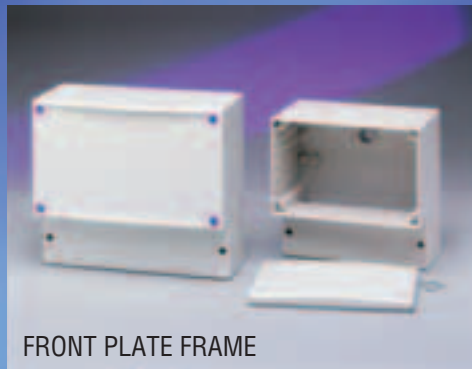
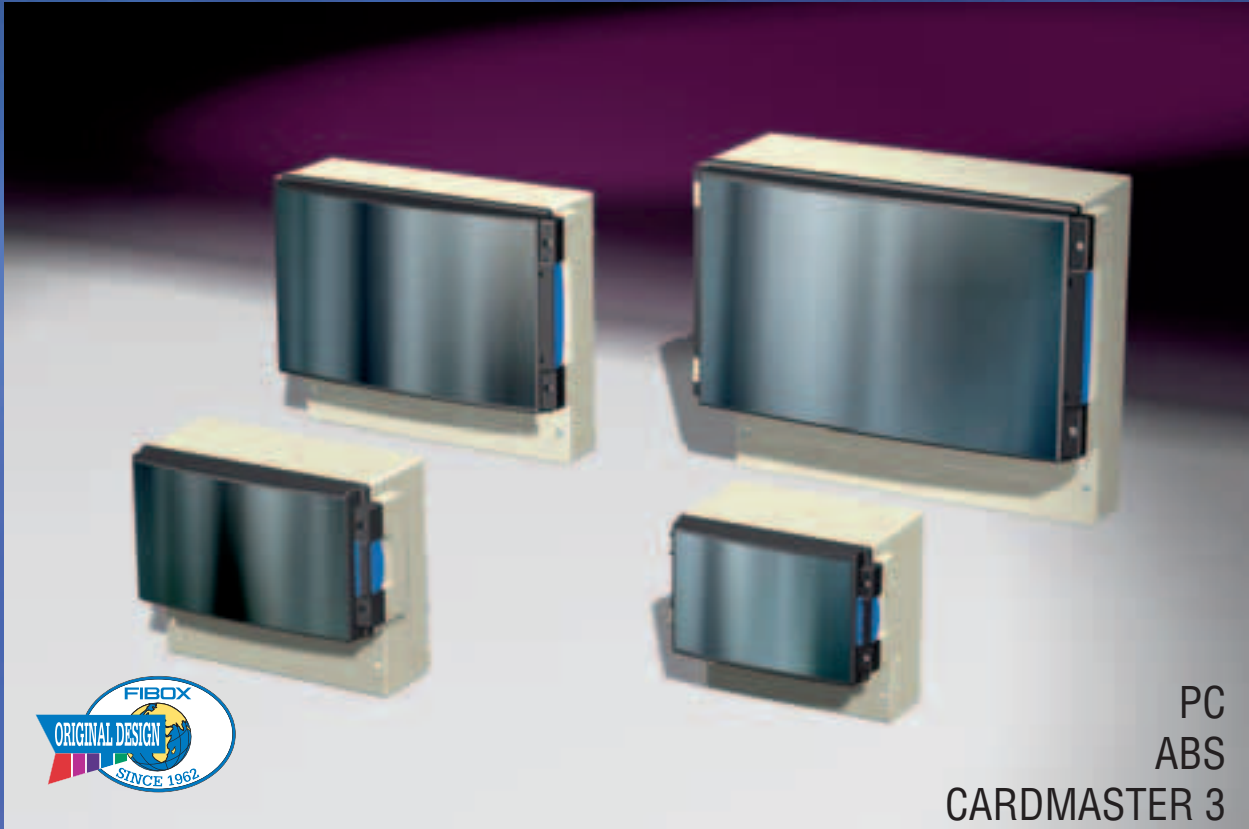


# FIBOX

## CARDMASTER

FIBOX CARDMASTER



A new generation of FIBOX CARDMASTER enclosures, featuring improved design and colors, is available in polycarbonate and ABS. Designed for use with modular components, the FIBOX CARDMASTER 3 range is ideal for packaging instrumentation, measurement, monitoring and process control equipment.

The enclosure has built in PCB card guides and a separate terminal wiring compartment.

Hinged transparent covers have quick release latches.

All sizes available in either impact resistant polycarbonate or ABS.

# FIBOX CARDMASTER 3

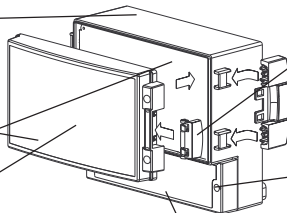
## Features

**Ecology also in design**  
more mounting pods and no brass inserts for better recycling

**50 % bigger opening**  
between two compartments

**More usable mounting space**  
in all corners for better utilization of PCB's

**Instrumentation compartment**  
Smoked grey transparent cover with textured sides

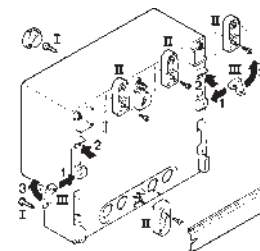


**Quick release thumb latch**  
Ergonomical, easy to operate quick release latch; you just need one thumb to open it. Degree of protection IP 65. Additional locking possible with self cutting screws.

**Terminal compartment**  
Knock-outs for easy wiring from both below and back of the enclosures

**50 % more space for terminals**  
Standard terminals can be used

## Three wall mounting alternatives



For 17/16 and 21/18 3

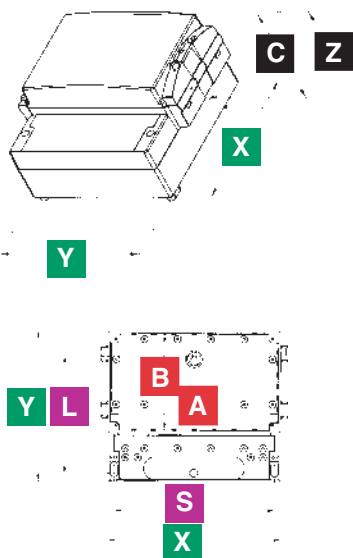
CARDMASTER 3 PC AND ABS ENCLOSURE NEMA 1, 4, 4X, 12 and 13 IP 65	Z inch.	Z mm	Including: Enclosure base, transparent cover, termination compartment cover, polyamide hinges, locking devices, and 8 mounting screws		Including: Enclosure base, terminal compartment cover, and 8 mounting screws. (A transparent cover and hinges are not included.)		B X A	
			ORDER SYMBOL	ORDER SYMBOL	C	C	L X S	
			Transparent cover, hinged base		No main cover, smooth side base	inch.	mm	inch. mm
17/16-LC3 17/16-L3 Y x X 6.5 in. 6.3 in. 166 mm 160 mm					Only....FC3 front plate frame, smooth side base			17/16 LC 17/16 LFC 17/16 L 17/16 C 17/16 FC 17/16
	3.1	80			PC 17/16-LC3	2.3	58	
	3.1	80			ABS 17/16-LC3	2.3	58	
	4.1	104			PC 17/16-LFC3	2.3	58	
17/16-C3 17/16-3 Y x X 6.5 in. 6.3 in. 166 mm 160 mm	4.2	106	PC 17/16-L3			3.3	84	17/18 C 17/18 FC 17/18
	4.2	106	ABS 17/16-L3			3.3	84	
	4.1	105			PC 17/16-C3	3.4	86	
	4.1	105			ABS 17/16-C3	3.4	86	
	4.7	119,5			PC 17/16-FC3	3.4	86,7	
	5.3	134	PC 17/16-3			4.4	113	
21/18-C3 21/18-3 Y x X 8.4 in. 7.3 in. 213 mm 185 mm	5.3	134	ABS 17/16-3			4.4	113	21/18 C 21/18 FC 21/18
	3.4	87			PC 21/18-C3	2.8	71	
	3.4	87			ABS 21/18-C3	2.8	71	
	4.0	102			PC 21/18-FC3	2.8	71	
	4.6	118	PC 21/18-3			3.8	97	
	4.6	118	ABS 21/18-3			3.8	97	
28/28-0 II 28/28-D II Y x X 11.0 in. 11.0 in. 280 mm 280 mm	6.0	153	PC 28/28-0 II			6.0	150	Remarks: Size 28/28-0 II including: Enclosure body, (PC with knock-outs), open smoked transparent cover (SOLID FRAME), cover screws, 4 mounting screws, and 4 mounting screws for mounting plate.  Remarks: Size 28/28-D II including: Enclosure body, (PC with knock-outs), closed smoked transparent cover (SOLID FRAME), cover screws, 4 mounting screws, and 4 mounting screws for mounting plate.
	6.0	153	ABS 28/28-0 II			6.0	150	
	6.0	153			PC 28/28-D II	3.9	100	
	6.0	153			ABS 28/28-D II	3.9	100	

click for dimensional drawings

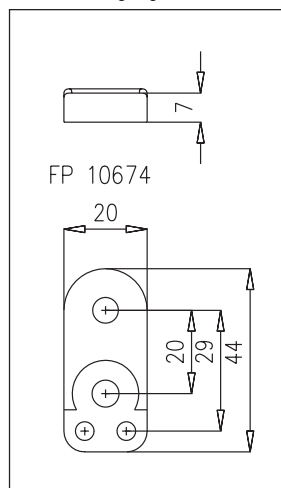
# FIBOX CARDMASTER 3

## SYMBOLS AND ABBREVIATIONS

- Y** Outside height
- X** Outside width
- Z** Outside depth
- C** Usable depth
- B** Back panel mount
- A** Back panel mount
- L** Wall mount
- S** Wall mount

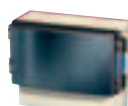

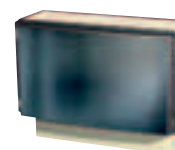


FP 10674  
Wall fastening lug



### CARDMASTER 3

PC	17/16-LFC3	Type L=low base C3=without main cover and hinge lugs 3=with hinged cover FC3=with screw mounted plastic cover
ABS	17/16-3	
		Width /length
		Enclosure material PC Polycarbonate ABS ABS-plastic

CARDMASTER 3 PC AND ABS ENCLOSURE NEMA 1, 4, 4X, 12 and 13 IP 65	Z		Including: Enclosure body, transparent cover, termination compartment cover, polyamide hinges, locking devices, and 6 mounting screws		Including: Enclosure body, termination compartment cover, front plate, and 6 mounting screws		B X A	
	inch.	mm	ORDER SYMBOL		ORDER SYMBOL	C C	L X S	
			Transparent cover		No main cover	inch. mm	inch. mm	
<b>21/18-1</b>  <b>Y</b> x <b>X</b> 8.4 in. 7.3 in. 213 mm 185 mm  Remarks: USA: Incl. FP 21/18 and base with 3 x 0.85" knock-outs.	4.4	113	PC 21/18-3 USA			3.6	91	21/18 USA
<b>30/25-3</b> <b>30/25-C3</b>  <b>Y</b> x <b>X</b> 11.6 in. 10.1 in. 296 mm 256 mm  Remarks: USA: Incl. FP 30/25 and base with 5 x 0.85" knock-outs.	4.8	123	PC 30/25-3 USA			4.0	103	30/25
	4.8	123	PC 30/25-3			4.0	103	30/25 USA
	4.8	123	ABS 30/25-3			4.0	103	30/25 USA
	3.6	92			PC 30/25-C3	2.7	68	30/25 C
3.6	92			ABS 30/25-C3	2.7	68		
<b>36/31-3</b> <b>36/31-C3</b>  <b>Y</b> x <b>X</b> 14.3 in. 12.4 in. 363 mm 316 mm  Remarks: USA: Incl. FP 36/31 and base with 2 x 0.85" and 2 x 1.09" knock-outs.	6.4	162	PC 36/31-3 USA			5.5	139	36/31
	6.4	162	PC 36/31-3			5.5	139	36/31 USA
	6.4	162	ABS 36/31-3			5.5	139	36/31 USA
	5.1	130			PC 36/31-C3	4.1	105	36/31 C
	5.1	130			ABS 36/31-C3	4.1	105	
								click for dimensional drawings

# FIBOX CARDMASTER 3

## TECHNICAL INFORMATION FOR CARDMASTER 3

PROPERTY	POLYCARBONATE (PC)	ABS	CONFORMITY TO STANDARDS (UL, CSA, CE, Lloyds, BV, FI)
Ingress Protection (EN 60529)	IP65	IP65	<b>USA</b> Enclosures for Electrical Equipment PC: UL Type 1 and 12K (UL 50/508) PC/ABS: NEMA 1, 4, 4X, 12 and 13
Impact Resistance (EN 50102)	IK 08/IK 07	IK 07	<b>Canada</b> Industrial Control Equipment Enclosures for Electrical Equipment/ULc
Temperature Range (short term)	Celsius 40°...120°C Fahrenheit 40°...250°F	-40°...80°C -40°...175°F	<b>Europe</b> Enclosures for Switch Gear and Control Gear Assemblies EN 50298:1998
Temperature Range (continuous)	Celsius -40°...80°C Fahrenheit -40°...175°F	-40°...60°C -40°...140°F	<b>Europe</b> Safety of Information Technology Equipment EN 60950
Electrical Insulation	Totally insulated <input type="checkbox"/>	Totally insulated <input type="checkbox"/>	<b>Australia</b> Enclosures for switch gear and control gear AS 3132-1991
Light Gray Parts Color	RAL 7035 Industry Gray	RAL 7035 Industry Gray	
Transparent Clear PC Cover	Smoked Gray	Smoked Gray	
Latches (PA)	RAL 5023 Blue	RAL 5023 Blue	
Gasket	PUR/EPDM	PUR/EPDM	
Enclosure Flammability Rating	UL94-5V	UL94HB	UL 746 C 5 in. vertical flame test
Glow Wire Test	960°C	650°C	IEC 695-2-1, Self-extinguishing
Non-toxicity	Halogen Free	Halogen Free	
UV resistance	UL 508 720 hours in "Weatherometer"		
Chemical Resistance *	Good	Good	

Data subject to change without notice. \*Consult separate raw material data for more detailed information

## ACCESSORIES

Product/size	Order symbol	Size inch.	Size mm
Front plate	FP 17/16 FP 21/18 FP 28/28 FP 30/25 FP 36/31	6.3 x 3.9 8.1 x 4.7 10.0 x 10.0 11.4 x 7.5 13.8 x 8.9	160 x 100 207 x 119 254 x 254 290 x 190 351 x 225
Back panels	MP 17/16 MP 21/18 MP 30/25 MP 36/31	5.4 x 5.2 7.9 x 5.6 11.1 x 8.5 13.6 x 10.2	136 x 133 200 x 142 282 x 215 345 x 258
Cover	CM 17/16-3T CM 21/18-3T CM 30/25-3T CM 36/31-3T	6.5 x 4.2 x 1.1 8.4 x 4.9 x 1.2 11.6 x 7.7 x 1.4 14.3 x 10.7 x 1.4	166 x 106 x 29 213 x 125 x 30 296 x 196 x 36 363 x 271 x 36
Wall mounting lug 17/16-21/18	FP 10674		

Product/size	Order symbol	Size inch.	Size mm
Set of hinges & latches	SET 17/16-21/18-3 SET 30/25-3 SET 36/31-3		
DIN-rail support	MB 20064		
Frame front plate, closed	FC PC 17/16 FC PC 21/18	6.3 x 3.9 8.0 x 4.5	160 x 100 203 x 115