

# FIBOX

Enclosing innovations



## PRODUCT OVERVIEW 9.0

NEMA  
4X

-40°F

175°F



# ARCA-JIC

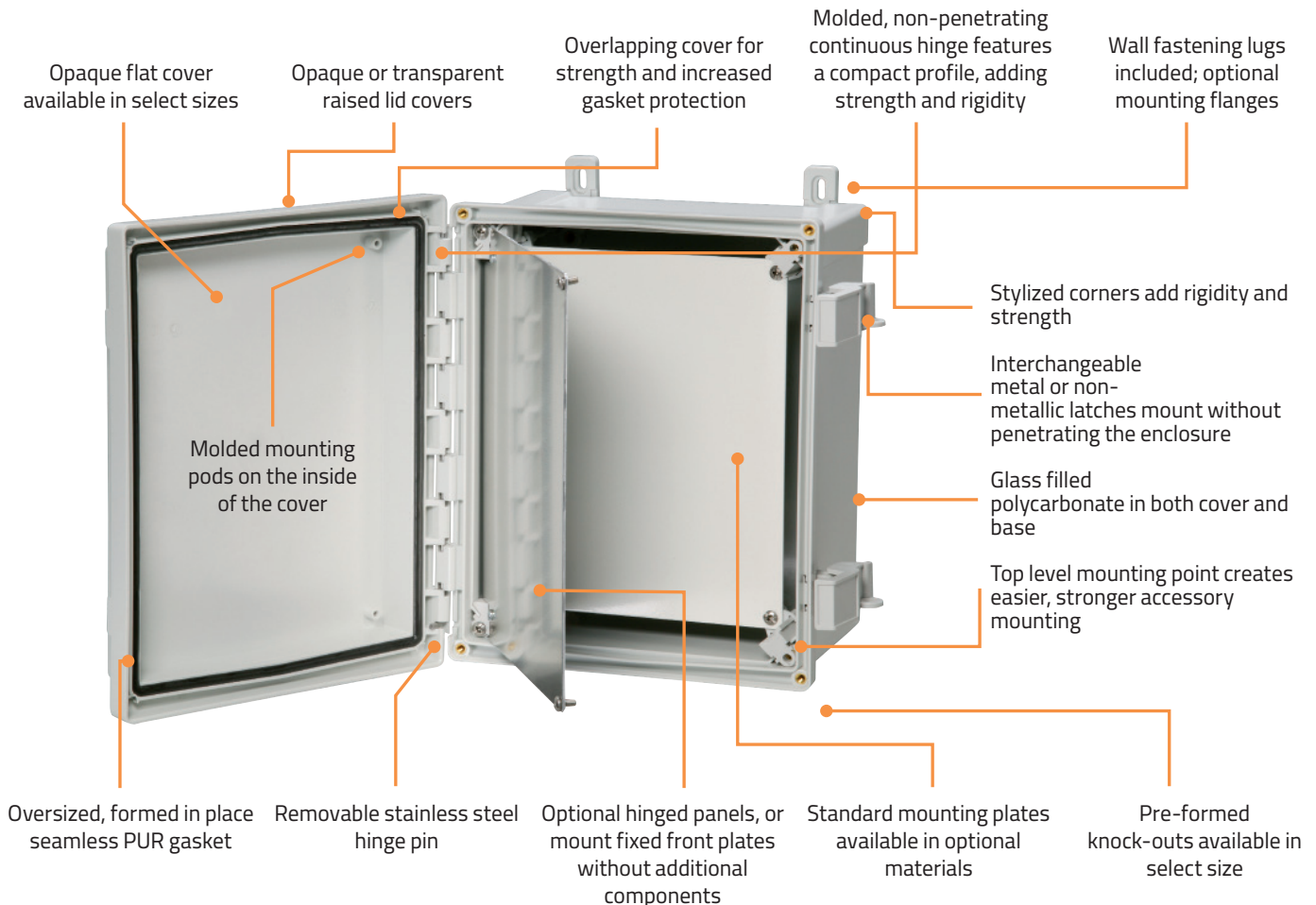
The ARCA-JIC enclosures are available in JIC sizes featuring industry-standard dimensions and panels, with screw or hinge covers. The ARCA-JIC series size range is 6.0" x 6.0" x 4.0" to 24.0" x 24.0" x 10.0".

Many sizes are available with raised opaque or transparent covers. Select sizes offer increased real estate with a sleek flat opaque cover design (FC) and optional industry-standard 1/2 and 3/4 inch pre-formed knock-outs (KO).

**PC:** NEMA 1, 4, 4X, 6, 6P, 12 & 13; IP 66/67; IK09



Dimensions Inches			
6 x 6 x 4	10 x 8 x 4	12 x 10 x 6 (KO)	20 x 16 x 8
8 x 6 x 4 (FC) (KO)	10 x 8 x 5 (FC) (KO)	14 x 12 x 6 (FC) (KO)	24 x 20 x 8
8 x 6 x 5 (KO)	10 x 8 x 6 (KO)	14 x 12 x 7 (KO)	24 x 24 x 10
8 x 8 x 4	10 x 10 x 6	16 x 14 x 8	
10 x 8 x 3 (FC)	12 x 10 x 5 (FC) (KO)	18 x 16 x 10	



# ARCA – IEC

ARCA - IEC is the largest polycarbonate enclosure on the market today! Driven by innovation and market demand, the ARCA - IEC is the ideal and cost-effective alternative to sheet steel cabinets needed in demanding locations. ARCA - IEC features the strength of a metal box with the added benefits of lightweight, rust-free high-grade thermoplastic.

**PC:** NEMA 1, 4, 4X, 12 & 13; IP 66, IK 10



Dimensions Inches		
7.87 x 11.81 x 5.9	15.75 x 15.75 x 8.26	19.68 x 19.68 x 11.81
11.81 x 7.87 x 5.9	15.75 x 11.81 x 8.26	23.62 x 15.75 x 8.27
11.81 x 11.81 x 8.26	15.74 x 19.68 x 8.26	23.62 x 31.49 x 11.81
11.81 x 15.78 x 5.9	15.74 x 23.62 x 8.26	27.55 x 19.68 x 11.81
11.81 x 15.78 x 8.26	19.68 x 15.75 x 8.27	31.49 x 23.62 x 11.81
15.75 x 11.81 x 5.9	19.68 x 15.75 x 8.27	

## Locking

- Double-bit
- Changeable lock inserts

## Inner door available

- No tools needed for installation
- Lockable
- Patent pending

## Gasket

- Oversized formed in place PUR gasket

## Mounting pods

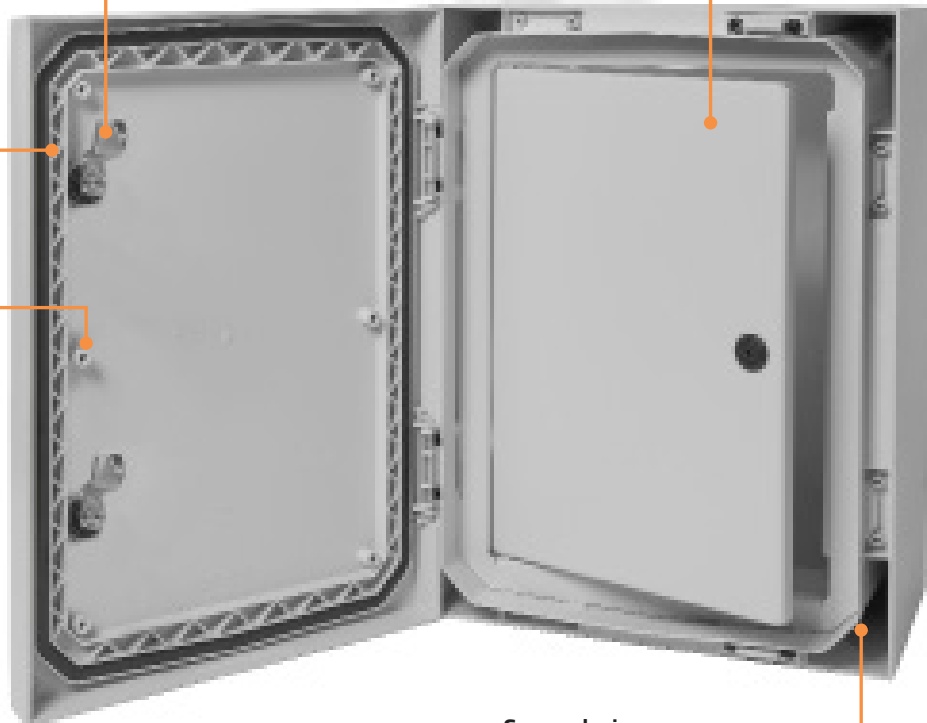
- On the base, cover and four base sides

## Molded rib design

- Increased strength and gasket protection

## Cover

- Front cover opens 120 °
- Portrait or landscape orientation
- Door stop available



## Corner design

- Double corner allows secure mounting outside gasket area

## MNX

MNX enclosures are designed to house and protect electrical and electronic components in hostile environments. The MNX range now exceeds over 260 variations including formed- in-place metric knock-outs (KO) allowing easy modification in the field or factory floor.

**PC:** NEMA 1, 4, 4X, 6, 12 & 13; IP 66/67; IK 08



Dimensions Inches			
3.9 x 3.9 x 1.4	5.1 x 5.1 x 1.4	7.1 x 5.1 x 3.3 (KO)	10 x 7.1 x 2.5 (KO)
3.9 x 3.9 x 2.0	5.1 x 5.1 x 2.0 (KO)	7.1 x 5.1 x 3.9 (KO)	10 x 7.1 x 3.0 (KO)
3.9 x 3.9 x 2.4 (KO)	5.1 x 5.1 x 2.4 (KO)	7.1 x 5.1 x 4.9 (KO)	10 x 7.1 x 3.5 (KO)
3.9 x 3.9 x 3.0 (KO)	5.1 x 5.1 x 3.0 (KO)	7.1 x 5.1 x 5.9 (KO)	10 x 7.1 x 3.9 (KO)
5.1 x 3.1 x 1.4	5.1 x 5.1 x 3.9 (KO)	7.1 x 5.1 x 6.9 (KO)	10 x 7.1 x 4.9 (KO)
5.1 x 3.1 x 2.0	5.1 x 5.1 x 4.9 (KO)	7.1 x 7.1 x 2.4 (KO)	10 x 7.1 x 5.9 (KO)
5.1 x 3.1 x 2.4 (KO)	7.1 x 5.1 x 1.4	7.1 x 7.1 x 3.0 (KO)	10 x 7.1 x 6.9 (KO)
5.1 x 3.1 x 3.0 (KO)	7.1 x 5.1 x 2.0	7.1 x 7.1 x 3.9 (KO)	14.2 x 10.0 x 6.0 (KO)
5.1 x 3.1 x 3.9 (KO)	7.1 x 5.1 x 2.4 (KO)	7.1 x 7.1 x 4.9 (KO)	
5.1 x 3.1 x 4.9 (KO)	7.1 x 5.1 x 3.0 (KO)	7.1 x 7.1 x 5.9 (KO)	

## NEO

The NEO is a New Enclosing Option designed to increase your productivity while decreasing costs. The NEO offers opaque and transparent cover options. UV resistant, radio-friendly polycarbonate makes NEO ideal for today's instrumentation applications.

**PC:** NEMA 1, 4 & 4X; IP 66/67, IK 09

Dimensions Inches		
12.6 x 8.6 x 5.9	12.6 x 12.6 x 5.9	16.5 x 12.6 x 5.9

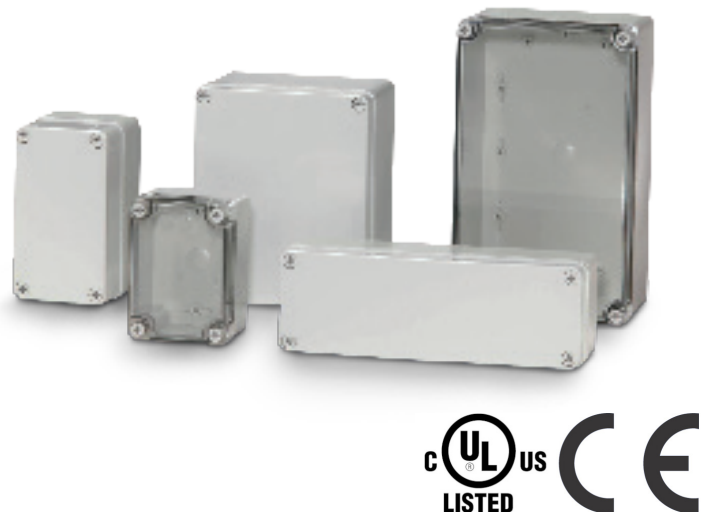


## PICCOLO

PICCOLO enclosures are designed to house push buttons, terminal blocks, motor starters and electronic devices. They are ideal for mounting and protecting process control sensors and switches.

**PC:** NEMA 1,4,4X, 6/ 6P; IP 66/67; IK 08

Dimensions Inches		
4.3 x 3.1 x 2.6	6.7 x 3.1 x 2.6	9.1 x 3.1 x 2.6
4.3 x 3.1 x 3.3	6.7 x 3.1 x 3.3	9.1 x 3.1 x 3.3
5.5 x 3.1 x 2.6	6.7 x 5.5 x 3.7	9.1 x 5.5 x 3.7
5.5 x 3.1 x 3.3		9.1 x 5.5 x 4.9



## CAB

CAB wall mounting cabinet enclosures feature hinged doors with opaque or transparent cover options and quick-release padlocking latches. The CAB series is ideal for mounting and housing operator controls and process controllers.

**PC:** NEMA 1, 4, 4X, 12, & 13; IP 65; IK 08



Dimensions Inches		
5.9 x 5.9 x 4.3	11.8 x 11.8 x 7.1	19.7 x 15.7 x 7.9
11.8 x 7.9 x 7.1	15.7 x 11.8 x 7.1	23.6 x 15.7 x 8.7

## CARDMASTER

CARDMASTER enclosures are ideal for packaging instrumentation, monitoring and process control equipment. The CARDMASTER range features two specialized compartments. The first for circuit boards, operator controls, readouts. The second for terminal and interface wiring.

**PC:** NEMA 1, 4, 4X\* & 12K; IP 65; IK 07/08



Dimensions Inches			
6.5 x 6.3 x 3.5*	7.4 x 6.3 x 4.2	9.3 x 7.3 x 4.7*	12.4 x 10.2 x 4.3
6.5 x 6.3 x 4.2*	7.4 x 6.3 x 5.3	10.1 x 8.6 x 5.3	12.6 x 10.2 x 5.1
6.5 x 6.3 x 4.6*	8.4 x 7.3 x 4.0*	11.0 x 8.6 x 6.1	15.4 x 12.4 x 6.6

## EURONORD

EURONORD enclosures are designed to house DIN-rail mounted terminal blocks and various types of sensors. Fibox offers multiple sizes and styles, with more than 160 off-the-shelf versions available for specific requirements, including aluminum, polycarbonate, and fiberglass.

**PC:** NEMA 1, 4, 4X, 12 & 13; IP 66/67; IK 07/08



Dimensions Inches (PC)			
2.0 x 2.0 x 1.6	4.7 x 3.1 x 3.3	7.9 x 4.7 x 3.0	13.4 x 5.9 x 4.0
2.6 x 2.0 x 1.8	4.7 x 3.1 x 3.5	7.9 x 4.4 x 3.5	13.4 x 5.9 x 4.8
3.9 x 2.6 x 1.6	6.3 x 3.1 x 2.2	7.9 x 5.9 x 3.1	14.2 x 6.3 x 4.0
3.2 x 3.1 x 2.2	6.3 x 4.7 x 3.5	9.6 x 4.9 x 4.0	14.2 x 7.9 x 5.9
3.2 x 3.1 x 2.6	6.3 x 4.7 x 5.5	9.6 x 6.5 x 3.5	11.8 x 9.1 x 3.4
3.2 x 3.1 x 3.3	4.8 x 4.7 x 2.6	9.6 x 6.5 x 4.7	11.8 x 9.1 x 4.3
3.2 x 3.1 x 3.7	4.8 x 4.7 x 3	9.8 x 6.3 x 3.5	
4.7 x 3.1 x 2.2	4.8 x 4.7 x 3.7	9.8 x 6.3 x 4.9	
4.7 x 3.1 x 2.4	4.8 x 4.7 x 4.1	9.8 x 6.3 x 5.9	

Select sizes available in aluminium and fiberglass.

## SOLID

SOLID enclosures are an excellent choice to house electronic and electrical components. The SOLID series is available with screw and hinge covers. The SOLID series features an extension frame, allowing increased enclosure depth while maintaining all UL, IP, and IK classifications.



**PC:** NEMA 1, 3, 3S, 4, 4X, 6, 6P, 12 & 13;  
IP 66/67/68; IK 08



Dimensions Inches		
7.4 x 7.4 x 5.1	14.9 x 7.4 x 5.1	14.9 x 10.9 x 5.1
7.4 x 7.4 x 7.1	14.9 x 7.4 x 7.1	14.9 x 10.9 x 7.1
10.9 x 7.4 x 5.1	10.9 x 10.9 x 5.1	22.0 x 10.9 x 5.1
10.9 x 7.4 x 7.1	10.9 x 10.9 x 7.1	22.0 x 14.9 x 7.1

## TEMPO

TEMPO enclosures are designed to save time and money. The large cover offers ample real estate for printing, labels, or switches. The TEMPO is easy to assemble and install. Select sizes feature transparent covers (T) and formed-in-place metric knock-outs (KO).



**PC:** NEMA 1,4,4X; IP 65; IK 08



Dimensions Inches			
3.7 x 2.6 x 2.4 (KO)	7.4 x 4.8 x 3.5 (KO) (T)	9.4 x 7.5 x 4.2 (T)	13.5 x 11.4 x 4.6 (T)
4.3 x 4.3 x 2.6 (KO)	7.4 x 4.8 x 5.3 (KO)	9.4 x 7.5 x 6	13.1 x 11.4 x 6.3
5.1 x 3.7 x 2.6 (KO)	7.9 x 6.4 x 3.9 (KO) (T)	11.4 x 9.4 x 4.2 (T)	
5.1 x 5.1 x 3 (KO)	7.9 x 6.4 x 5.6 (KO)	11.4 x 9.4 x 6	

## SIZE CHART

H x W x D (Inches)	Enclosure	H x W x D (Inches)	Enclosure	H x W x D (Inches)	Enclosure
2.0 x 2.0 x 1.6	EURONORD	4.7 x 3.1 x 2.2	EURONORD	5.1 x 5.1 x 2.0	MNX
2.6 x 2.0 x 1.8	EURONORD	4.7 x 3.1 x 2.4	EURONORD	5.1 x 5.1 x 2.4	MNX
3.2 x 3.1 x 2.2	EURONORD	4.7 x 3.1 x 3.3	EURONORD	5.1 x 5.1 x 3.0	MNX
3.2 x 3.1 x 2.6	EURONORD	4.7 x 3.1 x 3.5	EURONORD	5.1 x 5.1 x 3.0	MNX
3.2 x 3.1 x 3.3	EURONORD	4.4 x 4.7 x 4.1	EURONORD	5.1 x 3.1 x 3.9	MNX
3.2 x 3.1 x 3.7	EURONORD	4.4 x 4.7 x 2.6	EURONORD	5.1 x 3.1 x 3.9	MNX
3.9 x 2.6 x 1.6	EURONORD	4.4 x 4.7 x 3.0	EURONORD	5.1 x 3.1 x 4.9	MNX
3.9 x 3.9 x 1.4	MNX	4.4 x 4.7 x 3.7	EURONORD	5.1 x 3.1 x 1.4	MNX
3.9 x 3.9 x 2.0	MNX	5.1 x 5.1 x 3.9	MNX	5.1 x 3.1 x 2.0	MNX
3.9 x 3.9 x 2.4	MNX	5.1 x 5.1 x 4.9	MNX	5.1 x 3.1 x 2.4	MNX
4.3 x 3.1 x 3.3	PICCOLO	5.1 x 5.1 x 1.4	MNX	5.1 x 3.1 x 3.0	MNX

H x W x D (Inches)	Enclosure	H x W x D (Inches)	Enclosure	H x W x D (Inches)	Enclosure
5.5 x 3.1 x 2.6	PICCOLO	8.0 x 6.0 x 5.0	ARCA JIC	12.0 x 10.0 x 5.0	ARCA JIC
5.5 x 3.1 x 3.3	PICCOLO	8.0 x 8.0 x 4.0	ARCA JIC	12.0 x 10.0 x 6.0	ARCA JIC
6.0 x 6.0 x 4.0	ARCA JIC	8.4 x 7.3 x 4.0	CARDMASTER	12.4 x 10.2 x 4.3	CARDMASTER
6.0 x 6.0 x 5.0	ARCA JIC	9.1 x 5.5 x 4.9	PICCOLO	12.6 x 8.66 x 5.91	NEO
6.3 x 4.7 x 5.5	EURONORD	9.1 x 5.5 x 3.7	PICCOLO	12.6 x 10.2 x 5.1	CARDMASTER
6.3 x 4.7 x 3.5	EURONORD	9.1 x 3.1 x 2.6	PICCOLO	12.6 x 12.6 x 5.91	NEO
6.3 x 3.1 x 2.2	EURONORD	9.1 x 3.1 x 3.3	PICCOLO	13.4 x 5.9 x 4.0	EURONORD
6.3 x 3.1 x 2.6	EURONORD	9.3 x 7.3 x 4.7	CARDMASTER	13.4 x 5.9 x 4.8	EURONORD
6.3 x 3.1 x 3.3	EURONORD	9.6 x 4.9 x 4.0	EURONORD	14.0 x 12.0 x 6.0	ARCA
6.3 x 3.1 x 3.7	EURONORD	9.6 x 6.5 x 4.7	EURONORD	14.0 x 12.0 x 7.0	ARCA
6.5 x 6.3 x 4.2	CARDMASTER	9.6 x 6.5 x 3.5	EURONORD	14.2 x 6.3 x 4	EURONORD
6.5 x 6.3 x 4.6	CARDMASTER	9.8 x 6.3 x 4.9	EURONORD	14.2 x 7.9 x 5.9	EURONORD
6.5 x 6.3 x 5.3	CARDMASTER	9.8 x 6.3 x 5.9	EURONORD	14.9 x 7.4 x 5.1	SOLID
6.5 x 6.3 x 3.5	CARDMASTER	9.8 x 6.3 x 3.5	EURONORD	14.9 x 7.4 x 7.1	SOLID
6.7 x 5.5 x 3.7	PICCOLO	10.0 x 8.0 x 4.0	ARCA JIC	14.9 x 10.9 x 5.1	SOLID
6.7 x 3.1 x 2.6	PICCOLO	10.0 x 8.0 x 5.0	ARCA JIC	14.9 x 10.9 x 7.1	SOLID
7.1 x 5.1 x 3.9	MNX	10.0 x 8.0 x 6.0	ARCA JIC	15.4 x 12.4 x 6.6	CARDMASTER
7.1 x 5.1 x 4.9	MNX	10.0 x 8.0 x 3.0	ARCA JIC	15.75 x 15.75 x 8.58	ARCA IEC
7.1 x 5.1 x 5.9	MNX	10.0 x 10.0 x 6.0	ARCA JIC	15.75 x 11.81 x 5.9	ARCA IEC
7.1 x 5.1 x 6.9	MNX	10 x 7.1 x 4.9	MNX	15.7 x 11.8 x 7.1	CAB
7.1 x 5.1 x 1.4	MNX	10 x 7.1 x 5.9	MNX	15.75 x 11.81 x 8.27	ARCA IEC
7.1 x 5.1 x 2.0	MNX	10 x 7.1 x 6.9	MNX	15.74 x 19.68 x 8.26	ARCA IEC
7.1 x 5.1 x 2.4	MNX	10 x 7.1 x 2.5	MNX	15.74 x 23.62 x 8.26	ARCA IEC
7.1 x 5.1 x 3.0	MNX	10 x 7.1 x 3.0	MNX	16.0 x 14.0 x 8.0	ARCA JIC
7.1 x 5.1 x 3.3	MNX	10 x 7.1 x 3.5	MNX	16.54 x 12.6 x 5.91	NEO
7.1 x 7.1 x 3.9	MNX	10.1 x 8.6 x 5.3	CARDMASTER	18.0 x 16.0 x 10.0	ARCA JIC
7.1 x 7.1 x 4.9	MNX	10.9 x 7.4 x 5.1	SOLID	19.69 x 19.69 x 8.27	ARCA IEC
7.1 x 7.1 x 5.9	MNX	10.9 x 10.9 x 5.1	SOLID	19.7 x 15.7 x 7.9	CAB
7.1 x 7.1 x 6.9	MNX	10.9 x 10.9 x 7.1	SOLID	19.68 x 15.75 x 8.27	ARCA IEC
7.1 x 7.1 x 2.4	MNX	11.0 x 8.6 x 6.1	CARDMASTER	19.68 x 27.55 x 11.81	ARCA IEC
7.1 x 7.1 x 3.0	MNX	11.8 x 9.1 x 4.3	EURONORD	20.0 x 16.0 x 8.0	ARCA JIC
7.1 x 7.1 x 3.3	MNX	11.81 x 7.87 x 5.9	ARCA IEC	22 x 10.9 x 5.1	SOLID
7.4 x 7.4 x 5.1	SOLID	11.8 x 7.9 x 7.1	CAB	22 x 14.9 x 7.1	SOLID
7.4 x 7.4 x 7.1	SOLID	11.8 x 9.1 x 3.4	EURONORD	23.62 x 15.75 x 8.27	ARCA IEC
7.9 x 4.7 x 3.0	EURONORD	11.8 x 11.8 x 7.1	CAB	23.6 x 15.7 x 8.7	CAB
7.9 x 4.7 x 3.5	EURONORD	11.81 x 11.81 x 8.58	ARCA IEC	23.62 x 31.49 x 11.81	ARCA IEC
7.87 x 11.81 x 5.9	ARCA IEC	11.81 x 15.78 x 5.9	ARCA IEC	24.0 x 20.0 x 8.0	ARCA JIC
7.9 x 5.9 x 3.1	EURONORD	12.0 x 10.0 x 5.0	ARCA JIC	24.0 x 24.0 x 10.0	ARCA JIC
8.0 x 6.0 x 4.0	ARCA JIC	12.0 x 10.0 x 6.0	ARCA JIC	27.55 x 19.68 x 11.81	ARCA IEC
				31.49 x 23.62 x 11.81	ARCA IEC

## ARCA IPW

The IPW (Instrument Protection Window) is a UL-listed, NEMA 4X rated HMI cover. The IPW can be mounted on any manufacturer's enclosure to provide safe and secure access to underlying components and instruments. IPWs are available with opaque or transparent covers and various locking options. Once locked, the dual FIP PUR gasketing maintains a dry, dust-free environment.

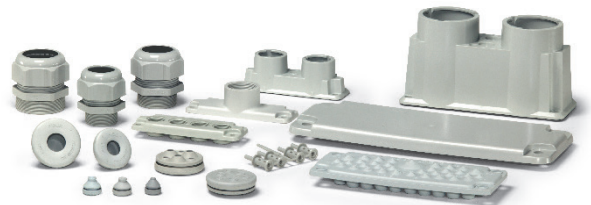
**PC:** NEMA 4, 4X, 12 & 13; IP 66/67, IK 09



Dimensions Inches		
10 x 8 x 3.31	12 x 10 x 3.31	14 x 12 x 3.31
16 x 14 x 3.31	18 x 16 x 3.31	

## CABLE MANAGEMENT

Fibox offers an excellent selection of cable glands, membrane glands, flanges, and cable entry solutions. Fibox's cable entry solutions maintain your enclosures' high ingress ratings to protect your investment from external forces.



## VENTILATION DEVICES

Fibox's enclosure vent kits feature a molded-in-place gasket that ensures a tight seal every time, yielding a rain-tight environment to keep valuable components dry and you worry-free.



## CUSTOMIZATION

Fibox can easily customize your enclosure selection to meet your exact requirements. Sophisticated CNC machinery provides holes, cutouts, recesses, and more. With custom colors and printing and all the standard hardware accessories, you might need. Let our in-house applications team work with you to find the best solution to your unique application needs.



410.760.9696  
888 342 6987  
[www.fiboxusa.com](http://www.fiboxusa.com)  
[sales.usa@fibox.com](mailto:sales.usa@fibox.com)

