

# PRODUCT OVERVIEW 8.0

NEMA  
4X

-40°F



175°F



# ARCA-JIC

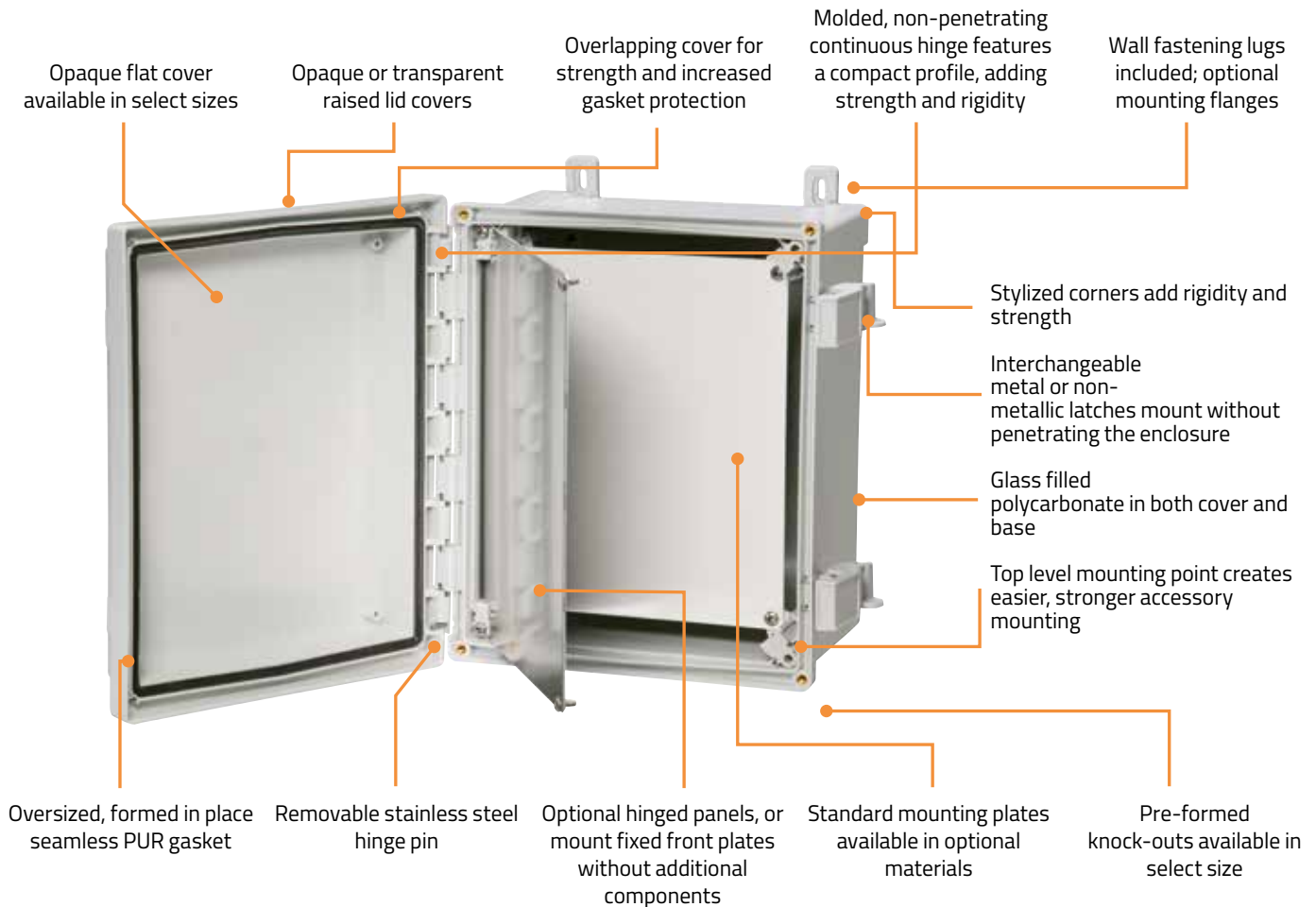
The ARCA-JIC enclosures are available in JIC sizes featuring industry-standard dimensions and panels, with screw or hinge covers. The ARCA-JIC series size range is 6.0" x 6.0" x 4.0" to 24.0" x 24.0" x 10.0".

Many sizes are available with raised opaque or transparent covers. Select sizes offer increased real estate with a sleek flat opaque cover design (FC) and optional industry-standard 1/2 and 3/4 inch pre-formed knock-outs (KO).

**PC:** NEMA 1, 4, 4X, 6, 6P, 12 & 13; IP 66/67; IK09



Dimensions Inches			
6 x 6 x 4	10 x 8 x 4	12 x 10 x 6 (KO)	20 x 16 x 8
8 x 6 x 4 (FC) (KO)	10 x 8 x 5 (FC) (KO)	14 x 12 x 6 (FC) (KO)	24 x 20 x 8
8 x 6 x 5 (KO)	10 x 8 x 6 (KO)	14 x 12 x 7 (KO)	24 x 24 x 10
8 x 8 x 4	10 x 10 x 6	16 x 14 x 8	
10 x 8 x 3 (FC)	12 x 10 x 5 (FC) (KO)	18 x 16 x 10	



## ARCA – IEC

ARCA - IEC is the largest polycarbonate enclosure on the market today! Driven by innovation and market demand, the ARCA - IEC is the ideal and cost-effective alternative to sheet steel cabinets needed in demanding locations. ARCA - IEC features the strength of a metal box with the added benefits of lightweight, rust-free high-grade thermoplastic.

**PC:** NEMA 1, 4, 4X, 12 & 13; IP 66, IK 10

Dimensions Inches		
7.87 x 11.81 x 5.9	15.75 x 15.75 x 8.26	19.68 x 19.68 x 11.81
11.81 x 7.87 x 5.9	15.75 x 11.81 x 8.26	23.62 x 15.75 x 8.27
11.81 x 11.81 x 8.26	15.74 x 19.68 x 8.26	23.62 x 31.49 x 11.81
11.81 x 15.78 x 5.9	15.74 x 23.62 x 8.26	27.55 x 19.68 x 11.81
11.81 x 15.78 x 8.26	19.68 x 15.75 x 8.27	31.49 x 23.62 x 11.81
15.75 x 11.81 x 5.9	19.68 x 15.75 x 8.27	



## CAB

CAB wall mounting cabinet enclosures feature hinged doors with opaque or transparent cover options and quick-release padlocking latches. The CAB series is ideal for mounting and housing operator controls and process controllers.

**PC:** NEMA 1, 4, 4X, 12, & 13; IP 65; IK 08

Dimensions Inches		
5.9 x 5.9 x 4.3	11.8 x 11.8 x 7.1	19.7 x 15.7 x 7.9
11.8 x 7.9 x 7.1	15.7 x 11.8 x 7.1	23.6 x 15.7 x 8.7



## TEMPO

TEMPO enclosures are designed to save time and money. The large cover offers ample real estate for printing, labels, or switches. The TEMPO is easy to assemble and install. Select sizes feature transparent covers (T) and formed-in-place metric knock-outs (KO).

**PC:** NEMA 1,4,4X; IP 65; IK 08

Dimensions Inches			
3.7 x 2.6 x 2.4 (KO)	7.4 x 4.8 x 3.5 (KO) (T)	9.4 x 7.5 x 4.2 (T)	13.5 x 11.4 x 4.6 (T)
4.3 x 4.3 x 2.6 (KO)	7.4 x 4.8 x 5.3 (KO)	9.4 x 7.5 x 6	13.1 x 11.4 x 6.3
5.1 x 3.7 x 2.6 (KO)	7.9 x 6.4 x 3.9 (KO) (T)	11.4 x 9.4 x 4.2 (T)	
5.1 x 5.1 x 3 (KO)	7.9x6.4 x 5.6 (KO)	11.4 x 9.4 x 6	



# CARDMASTER

CARDMASTER enclosures are ideal for packaging instrumentation, monitoring and process control equipment. The CARDMASTER range features two specialized compartments. The first for circuit boards, operator controls, readouts. The second for terminal and interface wiring.

**PC:** NEMA 1, 4, 4X\* & 12K; IP 65; IK 07/08



Dimensions Inches			
6.5 x 6.3 x 3.5*	7.4 x 6.3 x 4.2	9.3 x 7.3 x 4.7*	12.4 x 10.2 x 4.3
6.5 x 6.3 x 4.2*	7.4 x 6.3 x 5.3	10.1 x 8.6 x 5.3	12.6 x 10.2 x 5.1
6.5 x 6.3 x 4.6*	8.4 x 7.3 x 4.0*	11.0 x 8.6 x 6.1	15.4 x 12.4 x 6.6

# MNX

MNX enclosures are designed to house and protect electrical and electronic components in hostile environments. The MNX range now exceeds over 260 variations including formed- in-place metric knock-outs (KO) allowing easy modification in the field or factory floor.

**PC:** NEMA 1, 4, 4X, 6, 12 & 13; IP 66/67; IK 08



Dimensions Inches			
3.9 x 3.9 x 1.4	5.1 x 5.1 x 1.4	7.1 x 5.1 x 3.3 (KO)	10 x 7.1 x 2.5 (KO)
3.9 x 3.9 x 2.0	5.1 x 5.1 x 2.0 (KO)	7.1 x 5.1 x 3.9 (KO)	10 x 7.1 x 3.0 (KO)
3.9 x 3.9 x 2.4 (KO)	5.1 x 5.1 x 2.4 (KO)	7.1 x 5.1 x 4.9 (KO)	10 x 7.1 x 3.5 (KO)
3.9 x 3.9 x 3.0 (KO)	5.1 x 5.1 x 3.0 (KO)	7.1 x 5.1 x 5.9 (KO)	10 x 7.1 x 3.9 (KO)
5.1 x 3.1 x 1.4	5.1 x 5.1 x 3.9 (KO)	7.1 x 5.1 x 6.9 (KO)	10 x 7.1 x 4.9 (KO)
5.1 x 3.1 x 2.0	5.1 x 5.1 x 4.9 (KO)	7.1 x 7.1 x 2.4 (KO)	10 x 7.1 x 5.9 (KO)
5.1 x 3.1 x 2.4 (KO)	7.1 x 5.1 x 1.4	7.1 x 7.1 x 3.0 (KO)	10 x 7.1 x 6.9 (KO)
5.1 x 3.1 x 3.0 (KO)	7.1 x 5.1 x 2.0	7.1 x 7.1 x 3.9 (KO)	14.2 x 10.0 x 6.0 (KO)
5.1 x 3.1 x 3.9 (KO)	7.1 x 5.1 x 2.4 (KO)	7.1 x 7.1 x 4.9 (KO)	
5.1 x 3.1 x 4.9 (KO)	7.1 x 5.1 x 3.0 (KO)	7.1 x 7.1 x 5.9 (KO)	

## SOLID

SOLID enclosures are an excellent choice to house electronic and electrical components. The SOLID series is available with screw and hinge covers. The SOLID series features an extension frame, allowing increased enclosure depth while maintaining all UL, IP, and IK classifications.

**PC:** NEMA 1, 3, 3S, 4, 4X, 6, 6P, 12 & 13; IP 66/67/68; IK 08



Dimensions Inches		
7.4 x 7.4 x 5.1	14.9 x 7.4 x 5.1	14.9 x 10.9 x 5.1
7.4 x 7.4 x 7.1	14.9 x 7.4 x 7.1	14.9 x 10.9 x 7.1
10.9 x 7.4 x 5.1	10.9 x 10.9 x 5.1	22.0 x 10.9 x 5.1
10.9 x 7.4 x 7.1	10.9 x 10.9 x 7.1	22.0 x 14.9 x 7.1

## EURONORD

EURONORD enclosures are designed to house DIN-rail mounted terminal blocks and various types of sensors. Fibox offers multiple sizes and styles, with more than 160 off-the-shelf versions available for specific requirements, including aluminum, polycarbonate, and fiberglass.



Dimensions Inches (PC)			
2.0 x 2.0 x 1.6	4.7 x 3.1 x 3.3	7.9 x 4.7 x 3.0	13.4 x 5.9 x 4.0
2.6 x 2.0 x 1.8	4.7 x 3.1 x 3.5	7.9 x 4.4 x 3.5	13.4 x 5.9 x 4.8
3.9 x 2.6 x 1.6	6.3 x 3.1 x 2.2	7.9 x 5.9 x 3.1	14.2 x 6.3 x 4.0
3.2 x 3.1 x 2.2	6.3 x 4.7 x 3.5	9.6 x 4.9 x 4.0	14.2 x 7.9 x 5.9
3.2 x 3.1 x 2.6	6.3 x 4.7 x 5.5	9.6 x 6.5 x 3.5	11.8 x 9.1 x 3.4
3.2 x 3.1 x 3.3	4.8 x 4.7 x 2.6	9.6 x 6.5 x 4.7	11.8 x 9.1 x 4.3
3.2 x 3.1 x 3.7	4.8 x 4.7 x 3	9.8 x 6.3 x 3.5	
4.7 x 3.1 x 2.2	4.8 x 4.7 x 3.7	9.8 x 6.3 x 4.9	
4.7 x 3.1 x 2.4	4.8 x 4.7 x 4.1	9.8 x 6.3 x 5.9	

**AL:** NEMA 1, 4, 4X, 6, 12 & 13;  
IP 66/67/68; IK 08

**FG:** NEMA 1, 4, 4X, 12 & 13;  
IP 66; IK 08

**PC:** NEMA 1, 4, 4X, 12 & 13;  
IP 66/67; IK 07/08

Dimensions Inches (AL)			Dimensions Inches (FG)		
2.0 x 1.8 x 1.3	9.9 x 3.2 x 2.2	22.2 x 6.3 x 3.5	23.6 x 9.1 x 4.3	3.1 x 3.0 x 2.2	10.2 x 6.3 x 3.6
2.6 x 2.4 x 1.8	4.9 x 4.9 x 3.2	9.1 x 7.9 x 4.3	15.9 x 12.2 x 4.3	4.3 x 3.0 x 2.2	14.2 x 6.3 x 3.6
3.9 x 2.6 x 1.8	8.7 x 4.9 x 3.2	9.1 x 7.9 x 7.1	15.9 x 12.2 x 7.1	6.3 x 3.0 x 2.2	10.1 x 9.9 x 4.8
6.0 x 2.6 x 1.8	14.3 x 4.9 x 3.2	11.0 x 9.1 x 4.3	23.6 x 12.2 x 4.3	7.5 x 3.0 x 2.2	15.8 x 9.8 x 4.7
3.2 x 3.0 x 2.2	6.4 x 6.4 x 3.6	13.0 x 9.1 x 4.3	23.6 x 12.2 x 7.1	4.8 x 4.7 x 3.5	16.0 x 15.8 x 4.7
5.0 x 3.2 x 2.2	10.4 x 6.4 x 3.6	13.0 x 9.1 x 7.1		8.7 x 4.7 x 3.5	
7.0 x 3.2 x 2.2	14.2 x 6.3 x 3.5	15.8 x 9.1 x 4.3		6.3 x 6.3 x 3.6	
4.7 x 3.1 x 2.2	4.8 x 4.7 x 3.7	9.8 x 6.3 x 4.9			
4.7 x 3.1 x 2.4	4.8 x 4.7 x 4.1	9.8 x 6.3 x 5.9			

# INSTRUMENT PROTECTION WINDOWS

The IPW (Instrument Protection Window) is a UL-listed, NEMA 4X rated HMI cover. The IPW can be mounted on any manufacturer's enclosure to provide safe and secure access to underlying components and instruments. IPWs are available with opaque or transparent covers and various locking options. Once locked, the dual FIP PUR gasketing maintains a dry, dust-free environment.

**PC:** NEMA 4, 4X, 12 & 13; IP 66/67, IK 09

Dimensions Inches		
10 x 8 x 3.31	12 x 10 x 3.31	14 x 12 x 3.31
16 x 14 x 3.31	18 x 16 x 3.31	

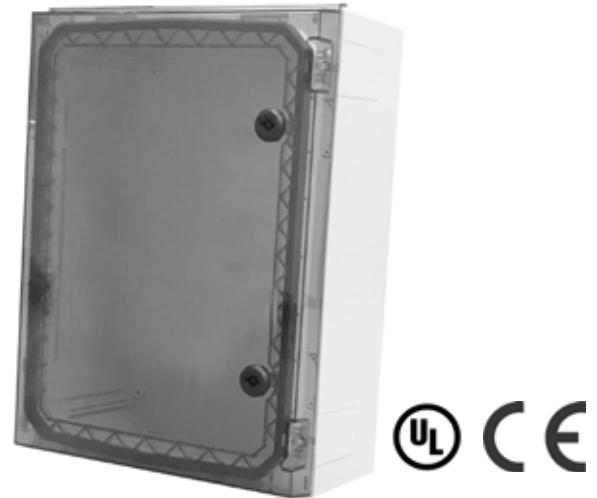


# NEO

The NEO is a New Enclosing Option designed to increase your productivity while decreasing costs. The NEO offers opaque and transparent cover options. UV resistant, radio-friendly polycarbonate makes NEO ideal for today's instrumentation applications.

**PC:** NEMA 1, 4 & 4X; IP 66/67, IK 09

Dimensions Inches		
12.6 x 8.6 x 5.9	12.6 x 12.6 x 5.9	16.5 x 12.6 x 5.9



# CUSTOMIZATION

Fibox can easily customize your enclosure selection to meet your exact requirements. Sophisticated CNC machinery provides holes, cutouts, recesses, and more. With custom colors and printing and all the standard hardware accessories, you might need. Let our in-house applications team work with you to find the best solution to your unique application needs.

# CABLE MANAGEMENT

Fibox offers an excellent selection of cable glands, membrane glands, flanges, and cable entry solutions. Fibox's cable entry solutions maintain your enclosures' high ingress ratings to protect your investment from external forces.

# VENTILATION DEVICES

Fibox's enclosure vent kits feature a molded-in-place gasket that ensures a tight seal every time, yielding a rain-tight environment to keep valuable components dry and you worry-free.



**FIBOX**  
Enclosing innovations

410.760.9696  
888.342.6987  
www.fiboxusa.com  
sales@fiboxusa.com